

MT. RUSHMORE & More!

11 Days with visits to Crazy Horse Monument, Custer State Park, Deadwood, House on the Rock & Wisconsin Dells

Wed to Sat, Jun 29 to Jul 9, '11

\$1595.95*

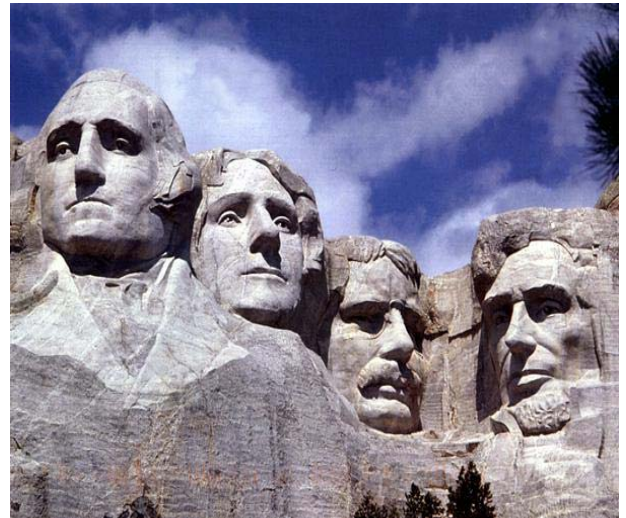
*Price is per person double occupancy ~ Single occupancy price is \$2045.95 ~ Triple occupancy \$1555.95. Prices listed have been discounted from regular prices by \$60. to reflect payment(s) by check, money order or cash. If payment(s) made by other means, exceed the deposit amount of \$300. per person (plus optional travel insurance premium, if purchased), the \$60. discount will not apply and regular prices will be charged.

Deposit required \$300. per person plus Travel Insurance, if purchased, of \$144. Double ~ \$140. Triple occupancy ~ \$185. Single occupancy. Travel Insurance Premium is not included in the trip price.

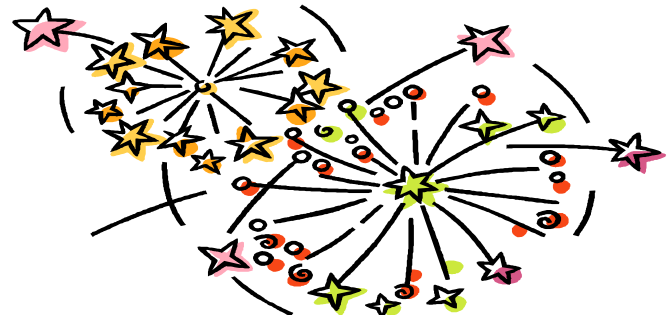
Full payment due April 9, 2011

Featured Trip Highlights Include:

- * Deluxe motor coach transportation from several Pa/NJ pick up points with free parking at some designated pick up points
- * 10 nights first-class hotel accommodations
- * 3 full hot breakfasts and 7 continental breakfasts
- * 9 delicious dinners
- * Mt. Rushmore Memorial, including evening light ceremony
- * View the Fourth of July Fireworks
- * Visit to Crazy Horse Monument
- * Visit Custer State Park - including driving the Wildlife Loop
- * Visit Badlands National Park
- * Guided Tour of Deadwood
- * Visit Historic Amana Colonies in Iowa
- * Take a Boat ride through the Wisconsin Dells
- * Fully Escorted
- * Baggage handling at hotels
- * All taxes on included features and meal gratuities (Based on Nov 2010 levels)



For Information & Reservations call:
THE TRAVEL AUTHORITY, Inc.
800-220-3900 or 215-638-5750



Your Mt. Rushmore & More! Spectacular Vacation Itinerary:

Wed, June 29: Depart from the Philly Area & Delaware Valley pick up locations on a deluxe motor coach for your adventure in South Dakota with frequent stops including a luncheon stop (on your own). Your journey will continue to your en route hotel and dinner this evening will be on your own.

Thu, June 30: Check out of your hotel after enjoying your continental breakfast and continue west into Illinois or Iowa, where you'll stop overnight. Dinner this evening will be in an area restaurant. (CB, D)

Fri, July 1: Following continental breakfast, you'll board your motor coach and depart for the historic Amana Colonies. Following a morning tour and lunch (on own), you will continue to South Dakota where you will overnight in Sioux City. Dinner this evening will be in a nearby restaurant. (CB, D)

Sat, July 2: Your motor coach awaits you, after enjoying your continental breakfast, to continue your sojourn to the Mt. Rushmore area. En route you'll visit the Corn Palace, a multi-use facility showcasing the area's agricultural exhibits. You'll arrive in Keystone, SD area for dinner and hotel check-in, your home for the next 3 nights. You'll board your motor coach for Mt. Rushmore to view the evening lighting ceremony. (CB, D)

Sun, July 3: This morning you'll enjoy a full hot breakfast at your hotel before your motor coach departs for the Borglum Historical Center to learn the history of Gutzon Borglum, the sculptor of Mount Rushmore. You'll continue to Mount Rushmore National Memorial, America's "Shrine of Democracy" and a symbol of the nation's rich history, rugged determination and love of freedom. You'll visit the magnificent Crazy Horse Monument and learn about sculptor Korczak Ziolkowski. You'll continue to Custer State Park, and enjoy a tour of the Wildlife Loop Road, taking you through rolling prairies and pine covered hills. After dinner, you'll enjoy the Mount Rushmore holiday fireworks. (FB, D)

Mon, July 4: Your full hot breakfast awaits you after which you'll board your motor coach and head for Deadwood, SD, former home of "Wild Bill" Hickok and Calamity Jane, and now the location of gaming establishments in historic restored hotels and saloons. You'll enjoy a guided tour of Deadwood. This evening you'll be treated to a "Chuckwagon" dinner. (FB, D)

Tue, July 5: Following full hot breakfast, you'll check out of your hotel and board your motor coach to start your journey east stopping at the famous Wall Drug and Café, the world's largest drug store located in Wall, SD, where you'll have time for lunch (on own). This afternoon you'll visit the Badlands National Park en route to Minnesota where you'll overnight in an area hotel and have dinner in a local restaurant. (FB, D)

Wed, July 6: You'll check out of your hotel, after continental breakfast, and continue eastward to Wisconsin Dells, WI, and enjoy a cruise on the beautiful Wisconsin Dells in the afternoon. Tonight you will overnight in the area and have dinner in an local restaurant. (CB, D)

Thu, July 7: After continental breakfast, you'll check out your hotel and depart for Madison, WI where you'll visit the House on the Rock, the 14-room house which is the original structure of what is now an extraordinary complex of streets, buildings and gardens covering over 200 acres. Furnishings include Oriental art, stained glass lamps, bronze statuary and a 3-story bookcase filled with rare books. After this visit, you'll head for the Chicago area where you'll overnight. Dinner will be at an local restaurant this evening. (CB, D)

Fri, July 8: Enjoy continental breakfast at your hotel, check out and depart for Chicago's famous Navy Pier where you'll have free time to enjoy the Navy Pier attractions and lunch (own own). This afternoon, you'll depart for your overnight hotel. Dinner will be in a local area restaurant. (CB, D)

Sat, July 9: Following your continental breakfast at your hotel, you'll board your motor coach for home arriving at your Philly Area & Delaware Valley pick up locations in the afternoon with a wealth of memories from your journey to Mount Rushmore and the mysterious Black Hills of South Dakota. (CB)



Holiday Fireworks



Your Welcome to Deadwood

THE Travel Authority, Inc. Mt. Rushmore & More Trip 2011
Terms and Conditions Contract & Enrollment Form

TO ENROLL a signed application and deposit of **\$300** per person is required plus non-refundable travel insurance premium (unless you choose not to purchase it by checking the "OPT OUT" box on this enrollment form). Full payment is due on or before **75 days prior to departure**. Bookings, if space is still available, made on or after **75 days prior to departure** must be accompanied by full payment.

REQUIRED IDENTIFICATION: All participants must carry a government issued photo ID such as a Driver's License) at all times. CLEARLY PRINT your name(s) on this enrollment form as it appears on the identification you will be using on the trip. Be sure to check the spelling on the confirmation you receive from THE Travel Authority, Inc. and check it again when you receive the actual documents. You must contact THE Travel Authority, Inc. immediately to advise of any errors. If you are denied any tour component, as a result of inadequate or missing identification, THE Travel Authority, Inc. will not be responsible for any expenses and/or damages incurred as a result of such denial.

CANCELLATION CHARGES & REFUND POLICY: You have the right to cancel your trip. If you cancel your trip for any reason the following cancellation charges appearing on the appropriate chart below will be assessed per person. These charges are in no way punitive and include Agency Administrative Charges. Cancellation will not be deemed to have been made until written notification of such cancellation is received by THE Travel Authority, Inc. at P.O. Box 254, Bensalem, PA 19020. If written notice of cancellation is received by THE Travel Authority, Inc....

On or before 91 days prior to departure\$100. per person (plus non-refundable insurance premium, if purchased)

From 90 to 76 days prior to departure50% of trip price per person (plus non-refundable insurance premium, if purchased)

75 days or less prior to departure 100% of total trip price per person (plus non-refundable insurance premium, if purchased)

In the event a cancellation causes an additional cost (single room supplement, etc.) for a person(s) still going on the trip, the canceling party shall have that additional charge added to the cancellation charges. If you cancel, to receive any refund, you must return all travel documents to THE Travel Authority, Inc.. Refunds will be processed 30 days after receipt of your written cancellation and aforementioned documents. Written notice of cancellation (and travel documents, must be sent to THE TRAVEL AUTHORITY, INC. P.O. Box 254, Bensalem PA 19020. Date of cancellation shall be determined by the date on which such written notification is received by THE Travel Authority. Telephoned or other non-written communication to THE Travel Authority, Inc. will not constitute notice of cancellation. If a tour member's full payment is not received by THE Travel Authority, Inc. by due date, the reservation may be deemed canceled, at the sole discretion of THE Travel Authority, Inc. In such instance, the cancellation provisions detailed above will apply with the date of cancellation being deemed the date at which payment was past due. As no exceptions shall be made on the cancellation charges, you are strongly urged to purchase trip protection that includes Trip Cancellation Protection.

COMPREHENSIVE TRAVEL PROTECTION It is strongly recommended that you purchase Comprehensive Travel Protection for your trip including trip cancellation fee reimbursement, trip interruption, emergency medical and dental and lost or stolen baggage coverage. We offer a travel protection package administered by Trip Mate, Inc., Kansas City, MO. Call us for a pamphlet describing the plan's coverage, limitations and restrictions. The Travel Protection Plan Premiums are nonrefundable. Do not delay in purchasing this protection as preexisting medical conditions are covered ONLY IF YOU PURCHASE THE PROTECTION WITHIN 14 DAYS OF DEPOSITING YOUR TRIP. ! Coverage may not be purchased after you have made final payment. Unless you check off the "opt out" box, indicating you do not want the insurance, on the enrollment

form, you will be enrolled in and billed for the insurance we offer thru Trip Mate.

SPECIAL ASSISTANCE: " THE Travel Authority, Inc. and its agents" cannot provide special assistance for walking, eating or other personal needs. Those needing such assistance must be accompanied by a companion to provide such assistance. Any special needs requests must be received, in writing, by THE Travel Authority, Inc. at least 60 days prior to departure. A number of sites on this tour may not be handicapped accessible.

OTHER INFORMATION: Travel documentation will be mailed to the address provided on the enrollment form approximately 10 days prior to departure. On many trips, prices listed have been discounted to reflect payment by check, cash or money order. Payments by other means will negate this discount and regular price will be charged. Due to space limitations on the motor coaches, each traveler is allowed one standard sized suitcase plus a carry-on that must fit in the overhead compartment on the motor coach and is the solely the responsibility of the participant throughout the trip. Trip components, including, but not limited to Hotels, Airlines, Shows, Meals, etc. may be replaced by "THE Travel Authority, Inc. and its Agents" with components of equal value. After the trip has commenced, no refund will be made if you do not utilize a tour component(s). Tour may include visits to establishments in which you may, at your own discretion, make purchases. THE Travel Authority, Inc. and its Agents" make no representations concerning the merchants or their merchandise and/or services and are not responsible for any purchases you make during your trip. THE Travel Authority, Inc. reserves the right to cancel or reschedule any tour departure. In such instance, the only responsibility of THE Travel Authority, Inc. to the client is to refund to the amount received from the client for the tour reservation. THE Travel Authority, Inc. does not assume responsibility or any costs or fees related to the issuance and/or cancellation of air tickets or other travel or other arrangements not made through THE Travel Authority, Inc. Smoking is not permitted on vehicles and may be restricted in hotels and other areas as well. If you miss transportation due to being late for a pickup, it will be your responsibility and expense to catch up with the tour. At the option of the Travel Authority, Inc's Tour Manager, or designatee, a seating rotation on motor coaches may be implemented. You may opt out of this rotation, but must sit in the rear of the vehicle to do so. Special requests will be forwarded to the appropriate airline, cruise line, hotel, restaurant, etc. However, THE Travel Authority, Inc. can not guarantee the fulfillment of such request nor can it be held responsible for such lack of fulfillment.

RESPONSIBILITY AND LIMITATION OF LIABILITY: THE Travel Authority, Inc. P.O. Box 254, Bensalem, PA 19020, the Travel Agent, Sponsoring Organization(s) and their employees, agents and representatives (elsewhere in this document referred to as "THE Travel Authority, Inc.") act only as agents for tour members in making arrangements for buses, hotels, cruise ships, air flights and other transportation, sightseeing, restaurants and other services or components in connection with the tour. They will exercise reasonable care in making such arrangements. However, they do not assume any liability whatsoever for any injury, death, damage, loss, accident or delay to persons or property due to anything beyond their direct control, including, but not limited to, sickness, acts of war or terrorism, any act of default, negligence, wrongful act, error or omission of any hotel, carrier, restaurant, person or other third party rendering any of the services included in the tour, weather, machinery breakdown, strike or labor action, civil commotion, quarantine, action of a government, pilferage or act of God. The tickets, coupons, tariffs, rules or contracts currently in use by any bus company, carrier, cruise line, hotel, restaurant or other contractor or third party rendering services or components of the tour, shall constitute the sole contract between such contractor or third party and tour member. "THE Travel Authority, Inc. and its Agents" and other contractors or third parties supplying tour

services and components accept no responsibility for any injury, death damage, loss, accident or delay to persons or property for any reasons including, but not limited to, sickness, acts of war or terrorism, pilferage, labor disputes, machinery breakdown, quarantine, government restraints, weather, or any act, omission or event during the time tour members are not on board its own conveyance or within its own facility. THE Travel Authority, Inc. and the owners and/or operators of tour pick up locations are not responsible for vehicles left (or their contents), at any Tour Pick Up Location. The right is reserved to cancel or change itineraries, tour components or substitute services without notice and to decline to accept or retain any tour member at any time. No guarantees or warranties are expressed or implied as to the psychological satisfaction of tour members as pertains to the tour. No refunds will be made to tour members for unused tour components. In view of the statutory and/or contractual limitations that may apply to personal injury or property damage loss, the purchase by tour members of Trip Cancellation/Interruption reimbursement, Travel Accident, Emergency Medical and Health, Baggage, Trip Delay, Medical Transportation Assistance and other coverages are strongly recommended., THE Travel Authority, Inc. shall not be deemed to have received a tour member's funds until those funds are cleared into its bank account. THE Travel Authority, Inc., in the event of trip cancellation by supplier, shall have no responsibility other than a refund of any moneys paid by tour member, upon return of such funds from suppliers and

contractors for whom they act as Agent, less any cancellation charges and expenses incurred. Prices are based upon currency exchange rates, tariffs, taxes, fees, fuel surcharges and facility charges in effect at the time the tour was initially planned and are subject to change. Any increase in price of 15% or less of the total trip price(s) quoted herein shall not modify the cancellation or other terms of this agreement. Any legal action brought against The Travel Authority, Inc. shall only be brought in Bucks County, Pennsylvania. All services provided by "THE Travel Authority, Inc. and its Agents" shall be subject to the laws of Pennsylvania. Tour members agree that, if they are a party to a legal action against THE Travel Authority, Inc. they will reimburse "THE Travel Authority, Inc. and its Agents" for costs, including reasonable attorney's fees, associated with the defense of any action brought by the tour member(s) against THE Travel Authority, Inc. where said tour member(s) is unsuccessful in obtaining judgment against THE Travel Authority, Inc. Should any provision of this contract be found invalid, the remaining provisions, as set forth, shall survive and be enforceable. THE Travel Authority, Inc. is not responsible for typographical or other errors in advertisements, promotion materials, confirmations, billings, etc. and reserves the right to correct such errors. This document constitutes the entire agreement between the tour participant and THE Travel Authority, Inc. Any changes, additions or other representations that alter this agreement that may be expressed or implied by any person or entity shall not be valid.

Return Both Sides of Entire Page with Deposit: THE Travel Authority, Inc. Mt. Rushmore & More Trip 2011

TRIP _____ **DATES** _____ **Number of persons booking** | ___ |

I/We agree to the terms and conditions covering this trip. Enrollment and / or payment towards the trip indicates such acceptance:

Signature 1. _____ **date** _____ **Signature 2.** _____ **date** _____

Name 1 _____ **Name 2** _____
 (As it appears on your Identification) (As it appears on your Identification)

Date of Birth 1 _____ **Date of Birth 2** _____

Address 1 _____ **Address 2** _____

Home Phone 1 _____ **Home Phone 2** _____

Cell Phone 1 _____ **Cell Phone 2** _____

Email Address 1 _____ **Email Address 2** _____

TRAVEL INSURANCE is not included in your trip price. However, we strongly recommend this protection. A non-refundable Trip Mate Protection Premium will be added to your bill and deducted from your deposit unless you decline coverage by checking the "OPT OUT" box at the bottom of this paragraph. The per person premiums for this trip are **\$144** double occupancy, **\$140** triple occupancy and **\$185** for single occupancy participants.

>>> [] **CHECK HERE IF YOU DO NOT WANT OPTIONAL INSURANCE "OPT OUT"**

The checked box above indicates that I/we decline to purchase the offered optional insurance

TRIP DEPOSIT PER PERSON	\$300	
Insurance Premium (unless you opt out)	+	_____
Per Person Sub Total	\$	_____
Times Number of Clients Enrolling	x	_____
<u>TOTAL TO SUBMIT</u>	\$	Full Payment due by April 9, 2011

Make check payable to "THE Travel Authority, Inc."
& send (with enrollment form) to: P.O. Box 254
Bensalem, PA 19020

For Information & Reservations Call: THE Travel Authority at 215-638-5750, 800-220-3900

Copies of this form may be used provided both sides of page are duplicated in their entirety.

THE Travel Authority, Inc. reserves the right to correct typographical or other errors.